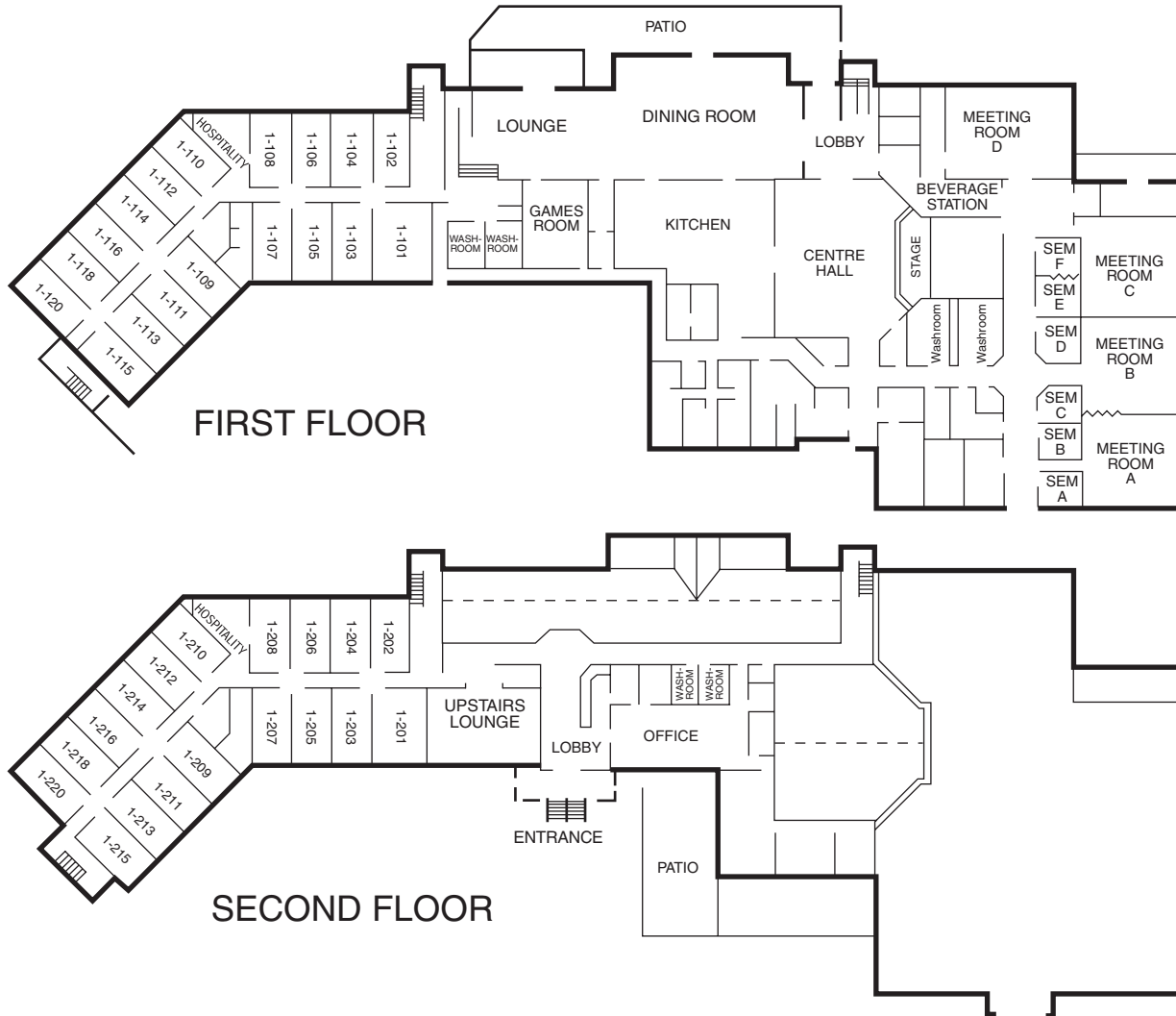


CTMC Floor Plan

Bayview Place Floor Plan (over)

CTMC

36 doubles/72 beds/36 bedrooms



CTMC Building	Size	Sq. ft.	Bdrm	Theatre	Clstrm	Mod	U-shape
Centre Hall	48' x 37'	1776	-	180	110	120	48
Centre Hall Stage	23' x 8' 6"						
Meeting Room A	30' x 30'	900	30	60	40	36	30
Meeting Room B	31' x 30'	930	30	60	40	36	30
Meeting Room C	31' x 30'	930	30	60	40	36	30
Meeting Room D	39' x 30'	1170	48	80	60	56	38
Meeting Room A & B (folding wall)	62' x 30'	1800	-	120	80	120	50
Seminar Room A	10' x 13'	-	10	-	-	-	-
Seminar Room B	11' x 13'	-	10	-	-	-	-
Seminar Room C	11' x 13'	-	10	-	-	-	-
Seminar Room D	14' x 13'	-	10	-	-	-	-
Seminar Room E	12' x 13'	-	12	-	-	-	-
Seminar Room F	12' x 13'	-	12	-	-	-	-
Seminar Room E & F (folding wall)	25' x 13'	-	24	20	-	-	-

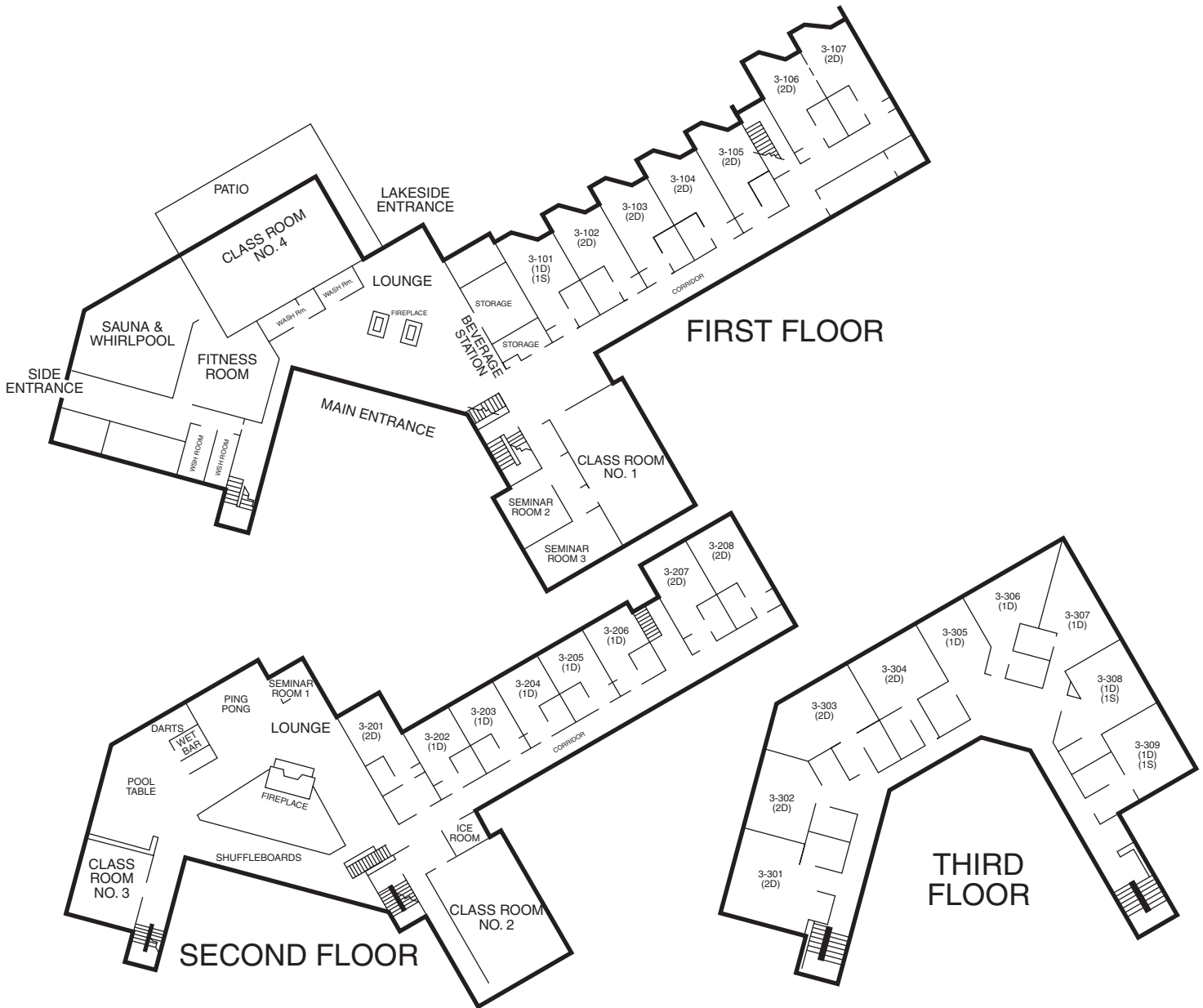
KEMPENFELT CENTRE TOTALS

140 BEDS • 79 BEDROOMS • 10 MAIN MEETING ROOMS • 10 SEMINAR ROOMS

... great meetings begin with the site! www.kempenfelt.com

Bayview Place Floor Plan

Bayview Place 16 doubles, 8 singles/40 beds/24 bedrooms



Bayview Place	Size	Sq. ft.	Bdrm	Theatre	Clsm	Mod	U-shape
Classroom 1	32' x 27'	864	24	60	30	30	25
Classroom 2	32' x 24'	768	32	62	35	30	28
Classroom 3	24' x 17'	408	18	25	16	16	16
Classroom 4	40' x 25'	1000	36	70	50	60	36
Seminar Room 1	11' x 9'	-	6	-	-	-	-
Seminar Room 2	12' x 12'	-	8	-	-	-	-
Seminar Room 3	18' x 10'	-	10	-	-	-	-

KEMPENFELT CENTRE TOTALS

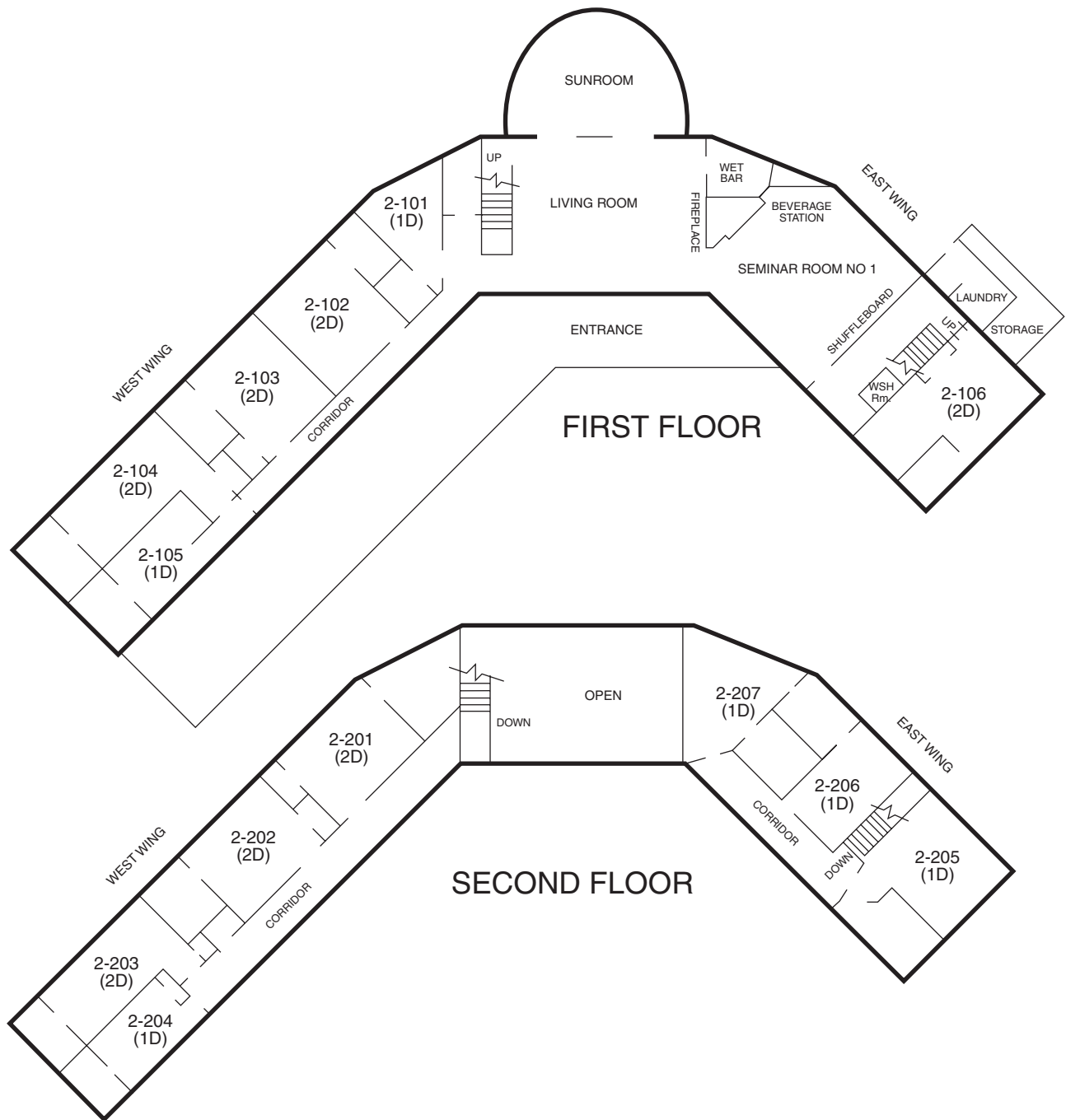
140 BEDS • 79 BEDROOMS • 10 MAIN MEETING ROOMS • 10 SEMINAR ROOMS

... great meetings begin with the site! www.kempenfelt.com

Lodge Floor Plan

Foster House Floor Plan, AV Support Equipment (over)

Lodge 6 singles/7 doubles/20 beds/13 bedrooms



Lodge	Size	Sq. ft.	Bdrm
Sunroom	34' x 19'	646	20
Seminar Room 1	20' x 20'	400	12

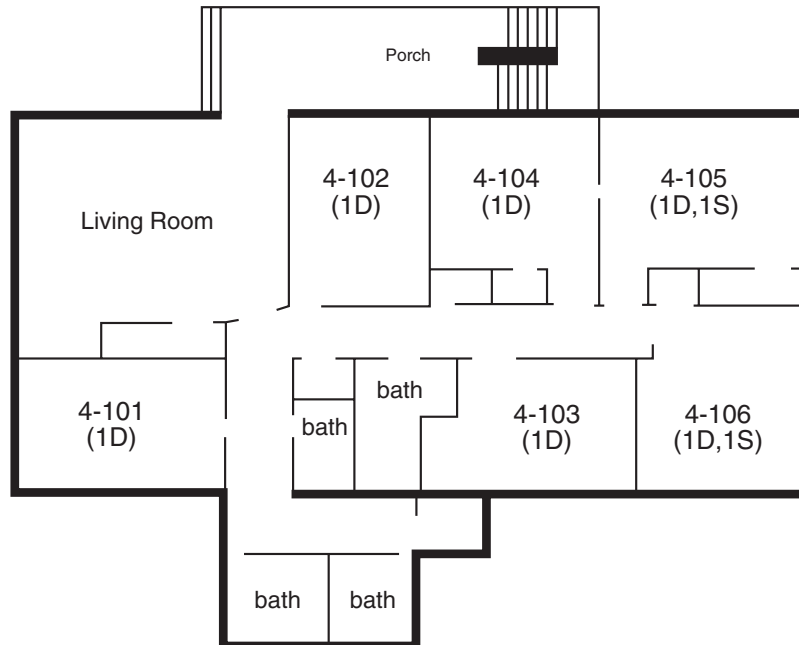
KEMPENFELT CENTRE TOTALS

140 BEDS • 79 BEDROOMS • 10 MAIN MEETING ROOMS • 10 SEMINAR ROOMS

... great meetings begin with the site! www.kempenfelt.com

Foster House Floor Plan

Foster House 2 doubles, 4 singles/8 beds/6 bedrooms



Audio Visual – Support Equipment

Available at no extra charge for residential groups:

(See Day Meeting Rate sheet for rental prices for non-residential groups)

- VCR - VHS format
- video camcorders
- P.A. system with wireless microphones
- portable projection screens (most rooms have built-in)
- flip charts
- portable table lectern with built-in p.a.
- large meeting rooms with adjacent break-out rooms connected by two-way mirror, as available (role playing)
- DVD player
- High Speed Internet (see attached)
- CD player
- TV monitors
- audio tape recorder
- speaker phone
- white boards

Subject to additional charge (see day meeting price list):

- multimedia projector
- laser pointers
- laptop computer
- portable computer station
- rear screen projection (Centre Hall only)

KEMPENFELT CENTRE TOTALS

140 BEDS • 79 BEDROOMS • 10 MAIN MEETING ROOMS • 10 SEMINAR ROOMS

... great meetings begin with the site! www.kempenfelt.com