



ALL Kempenfelt Meeting Packages INCLUDE;

- * Lakeside Accommodations * Full Hot & Cold 'Station-Style' Buffet Breakfast * Full Hot & Cold 'Station-Style' Buffet Lunch * Served 3 Course Dinner with 3 Entrée Selections * Selected Beverages with each meal
- * Unlimited 24hr. Access to Coffee/Tea/Beverage Break Stations * Main Meeting Room (Lockable with 24hr Access) * Evening Snack! (Delivered to your group's common area)

PLUS these COMPLIMENTARY items & services!

- * Your choice of 1 FREE copy of *The Big Book of Meeting Games* or *The Big Book of Team Building Games*  
- * State of the Art CISCO Wireless Network (Access available in all Meeting Rooms, Bedrooms, Lounges & Common Space) *
- * All Required Breakout Rooms (Lockable w/24hr Access) * All Required On-Site Standard A/V & Support Equipment *
- * All Required Meeting Room Set-up & Service * Parking * Use of All On-site Recreation Equipment & Facilities (Dble Tennis Courts, Golf Driving Nets, Hot Tub/Whirlpool, Sauna, Mountain Bikes, Paddleboats, Pool Tables, Shuffleboards, Other) *

Our Standard Great Rate! **\$189** Dbl. / **\$216** Sgle.

FREQUENT USER DISCOUNT RATE!

Min. 200 bednights over 12 months
\$186 Dbl. / **\$213** Sgle.

Min. 400 bednights over 12 months
\$177 Dbl. / **\$204** Sgle.

WEEKENDS 'R' WONDERFUL!

Fridays and/or Saturdays
\$177 Dbl. / **\$200** Sgle.

GREAT MONTHS TO MEET!

July & December 2011, January & March 2012
\$170 Dbl. / **\$197** Sgle.

FABULOUS FEBRUARY RATE!

No Minimum nights, no Minimum numbers. Just a **FAB FEB DISCOUNT ALL MONTH LONG!**
\$164 Dbl. / **\$191** Sgle.

LAST MINUTE MEETINGS!

Any new booking, any time, any number of people arriving 25 days or less from initial enquiry

2011/12 HOT DATE SPECIALS

June 27 to June 30, July 25 to Aug. 4, Aug. 29 to Sept. 8, Dec. 12 to 23/2011. Jan. 2 to 8, Feb. 13 to 18 and Mar. 12 to 16, 2012

\$139 Dbl. / **\$166** Sgle.

COUPLES WEEKEND RETREAT!

Attention Unions, Reunions, Church and Non-for-profit groups! Available Friday and/or Saturday nights. To qualify, 80% of group must be principle and significant other staying in same room. Rates are per couple/per room/per 24hr CMP

STANDARD
\$266.50 CPLE

GREAT MONTHS
\$263.50 CPLE

FABULOUS FEBRUARY
\$257.50 CPLE

LAST MINUTE/HOT DATES
\$232.50 CPLE

Day Meeting Package Rates

Includes:

- Coffee/tea with fresh assorted pastries on arrival
- Main meeting room
- Flip chart(s) w/markers
- Unlimited access to coffee/tea/beverage break stations
- Full buffet lunch
- Select lunch beverages
- Free Wi-Fi access
- Meeting room set-up and service

PRICE PER PERSON

1 – 15	16 – 25	26 – 40	41 – 200
\$41.00	\$39.00	\$37.00	\$35.00

AUDIO-VISUAL and SUPPORT EQUIPMENT

PER ITEM / PER DAY, DAY GROUPS ONLY

VCR or DVD with monitor	\$50
Rear screen projector (Centre Hall only)	\$50
Portable 4 channel P.A. system	\$50
Video camera with monitor	\$50

PER ITEM / PER DAY, DAY AND RESIDENTIAL GROUPS

Multimedia / Portable data projector \$50	Laptop computer \$100
---	-----------------------

ADDITIONAL CHARGES

MEALS: per person, dining room service

Breakfast Buffet	\$10
Lunch Buffet	\$16
Dinner	\$25
24 hr coffee/tea/beverage station access	\$6

SNACK TRAYS:

Cheese Tray	small \$45	large \$80
Vegetable Tray	\$30	\$50
Fruit Tray	\$30	\$50

OTHER: per person

Assorted cookies	\$1.25
Assorted pastries	\$1.95
Loaves (banana, carrot etc.)	\$1.95
Sweet tray assortment (2 pieces per person)	\$3.00
Assorted sandwich tray (1 1/2 per person)	\$4.95

Rates quoted do not include HST and are subject to change without notice.



1-705-722-8080

KEMPENFELT CONFERENCE CENTRE TOTALS

140 BEDS • 79 BEDROOMS • 11 MAIN MEETING ROOMS • 10 SEMINAR ROOMS

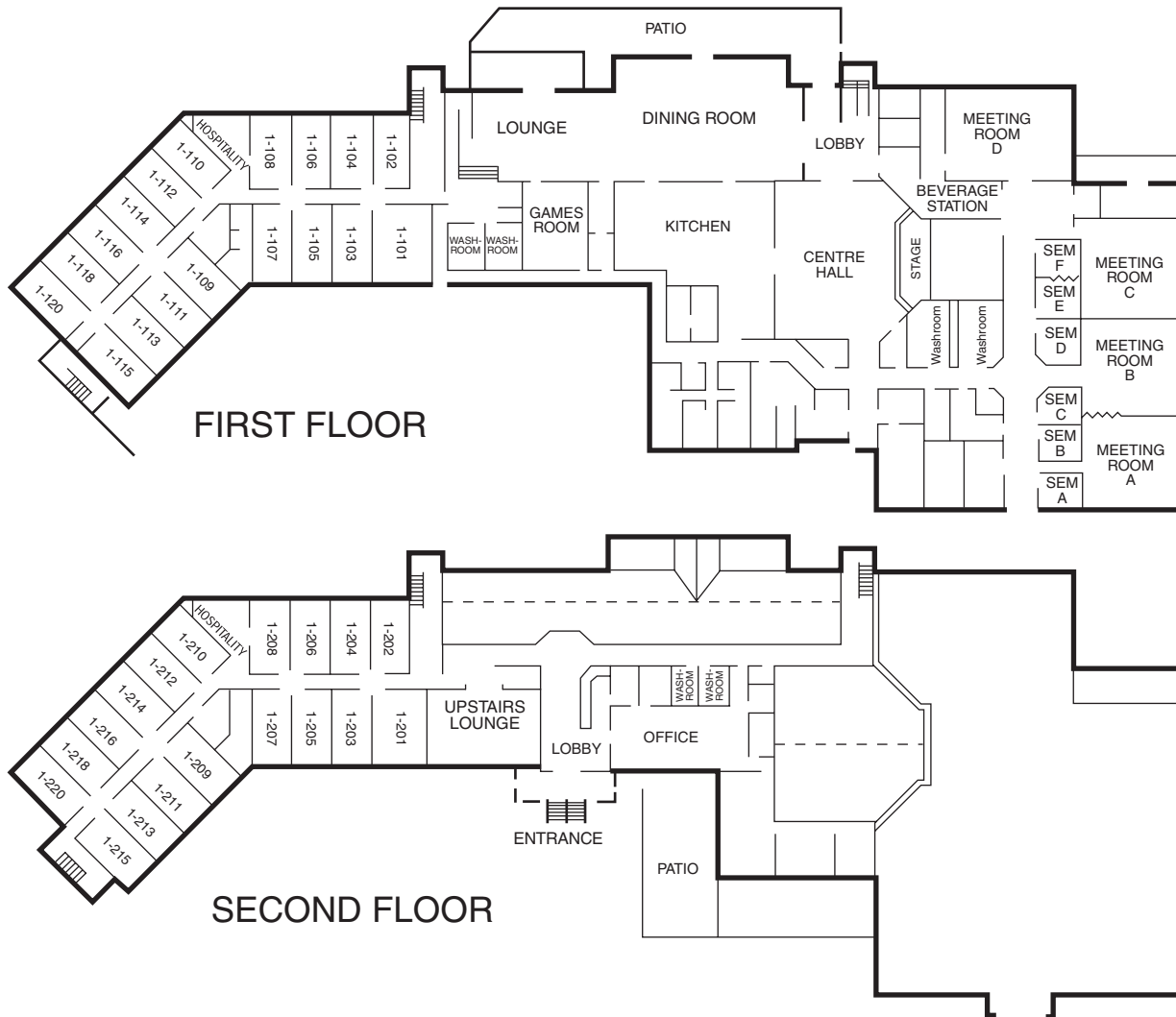
...Great Meetings Begin with the Site! Go to www.kempenfelt.com

CTMC Floor Plan

Bayview Place Floor Plan (over)

CTMC

36 doubles/72 beds/36 bedrooms



CTMC Building	Size	Sq. ft.	Bdrm	Theatre	Clstrm	Mod	U-shape
Centre Hall	48' x 37'	1776	-	180	110	120	48
Centre Hall Stage	23' x 8' 6"						
Meeting Room A	30' x 30'	900	30	60	40	36	30
Meeting Room B	31' x 30'	930	30	60	40	36	30
Meeting Room C	31' x 30'	930	30	60	40	36	30
Meeting Room D	39' x 30'	1170	48	80	60	56	38
Meeting Room A & B (folding wall)	62' x 30'	1800	-	120	80	120	50
Seminar Room A	10' x 13'	-	10	-	-	-	-
Seminar Room B	11' x 13'	-	10	-	-	-	-
Seminar Room C	11' x 13'	-	10	-	-	-	-
Seminar Room D	14' x 13'	-	10	-	-	-	-
Seminar Room E	12' x 13'	-	12	-	-	-	-
Seminar Room F	12' x 13'	-	12	-	-	-	-
Seminar Room E & F (folding wall)	25' x 13'	-	24	20	-	-	-

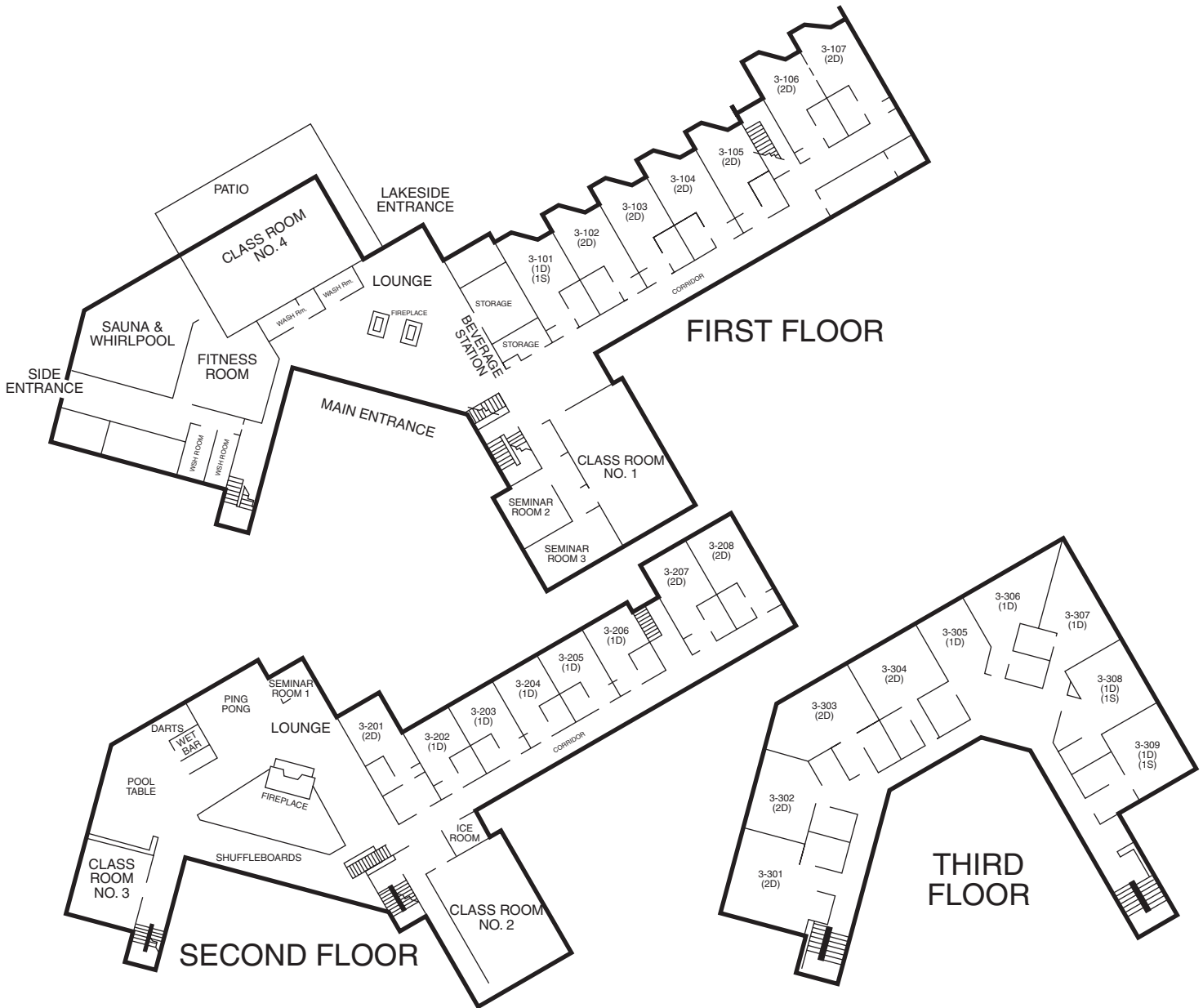
KEMPENFELT CENTRE TOTALS

140 BEDS • 79 BEDROOMS • 10 MAIN MEETING ROOMS • 10 SEMINAR ROOMS

... great meetings begin with the site! www.kempenfelt.com

Bayview Place Floor Plan

Bayview Place 16 doubles, 8 singles/40 beds/24 bedrooms



Bayview Place	Size	Sq. ft.	Bdrm	Theatre	Clsm	Mod	U-shape
Classroom 1	32' x 27'	864	24	60	30	30	25
Classroom 2	32' x 24'	768	32	62	35	30	28
Classroom 3	24' x 17'	408	18	25	16	16	16
Classroom 4	40' x 25'	1000	36	70	50	60	36
Seminar Room 1	11' x 9'	-	6	-	-	-	-
Seminar Room 2	12' x 12'	-	8	-	-	-	-
Seminar Room 3	18' x 10'	-	10	-	-	-	-

KEMPENFELT CENTRE TOTALS

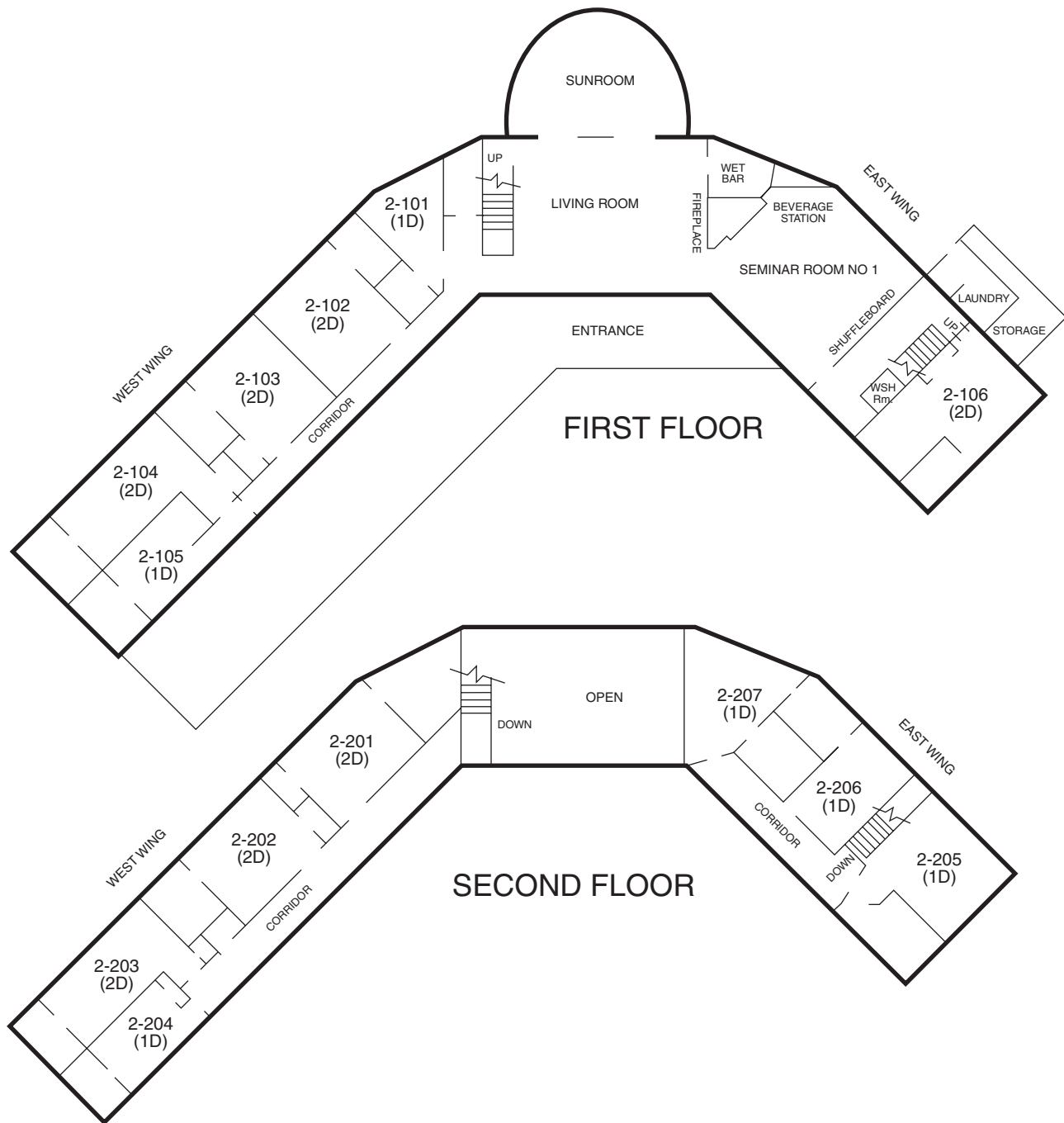
140 BEDS • 79 BEDROOMS • 10 MAIN MEETING ROOMS • 10 SEMINAR ROOMS

... great meetings begin with the site! www.kempenfelt.com

Lodge Floor Plan

Foster House Floor Plan, AV Support Equipment (over)

Lodge 6 singles/7 doubles/20 beds/13 bedrooms



Lodge	Size	Sq. ft.	Bdrm
Sunroom	34' x 19'	646	20
Seminar Room 1	20' x 20'	400	12

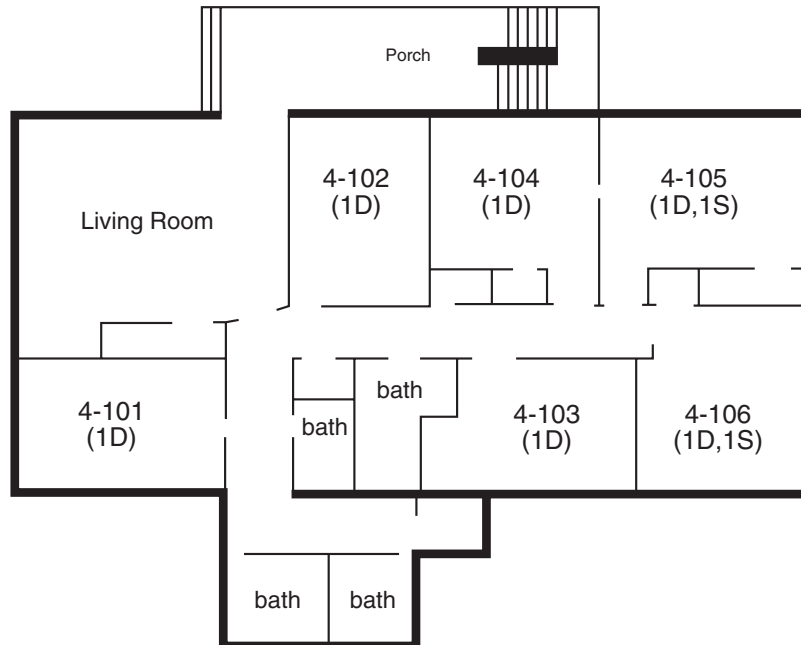
KEMPENFELT CENTRE TOTALS

140 BEDS • 79 BEDROOMS • 10 MAIN MEETING ROOMS • 10 SEMINAR ROOMS

... great meetings begin with the site! www.kempenfelt.com

Foster House Floor Plan

Foster House 2 doubles, 4 singles/8 beds/6 bedrooms



Audio Visual – Support Equipment

Available at no extra charge for residential groups:

(See Day Meeting Rate sheet for rental prices for non-residential groups)

- VCR - VHS format
- video camcorders
- P.A. system with wireless microphones
- portable projection screens (most rooms have built-in)
- flip charts
- portable table lectern with built-in p.a.
- large meeting rooms with adjacent break-out rooms connected by two-way mirror, as available (role playing)
- DVD player
- High Speed Internet (see attached)
- CD player
- TV monitors
- audio tape recorder
- speaker phone
- white boards

Subject to additional charge (see day meeting price list):

- multimedia projector
- laser pointers
- laptop computer
- portable computer station
- rear screen projection (Centre Hall only)

KEMPENFELT CENTRE TOTALS

140 BEDS • 79 BEDROOMS • 10 MAIN MEETING ROOMS • 10 SEMINAR ROOMS

... great meetings begin with the site! www.kempenfelt.com

Check Out Time: 10:30 a.m.

Dining Room Hours: Serving Times, unless otherwise requested, are:

Breakfast: 7:30 to 8:30 (buffet)

Lunch: 12:00 to 1:00 (buffet)

Dinner: 6:00 to 7:00 (table service)

Bar: The Kempenfelt Lounge is open Monday to Saturday from 11:00 a.m. to midnight and from 11:00 a.m. to 10:00 p.m. on Sundays. Later closings available upon request.

Snacks: Evening snacks are delivered to each group's common area around 9:00 p.m. Chocolate bars and chips can be purchased at the Front Desk. Soft drinks can be purchased from vending machines in the CTMC Building.

Internet Access: We are pleased to offer complimentary High Speed Internet Access which is configured to support VPN connectivity. Wi-Fi service is available throughout our entire property (wired connections are also available in all meeting rooms).

Telephones: All bedrooms are equipped with analog telephones complete with data ports. All meeting rooms are equipped with digital hands free/speakerphones. A separate dedicated analog extension is available in each meeting room for use with devices such as fax or modem. Payphones are located throughout the property.

Messages: Only urgent calls will be put through to meeting rooms. During the day, Front Desk staff will post all other messages on the message boards located outside of each group's meeting room or, if the caller prefers, they will put calls through to the voice mail in each guest's bedroom.

Televisions: All bedrooms and common areas have televisions with satellite channel service.

Amenities: All bedrooms are equipped with hair dryers, irons, ironing boards and alarm clock radios.

Newspapers: Complimentary copies of The Toronto Star are available each morning in the dining room while quantities last.

Ice: Ice machines are located on both floors of the CTMC Building in the bedroom wing. In the Bayview Building, the ice machine is located on the second floor in the bedroom wing. In the Lodge, the refrigerator is stocked with ice.

Indoor Recreation: Located in the Bayview Building is an 8 seat sauna, a rinse shower and an 8 person hot-tub/whirlpool room which is open from 9 a.m. to 10 p.m. A fitness room complete with exercise equipment and free weights is located just outside of the sauna/hot tub room and is always open. Guests will find a pool table and shuffleboard in the Games room next to the bar in the CTMC Building. The Games room on the second floor of the Bayview Building contains a pool table, darts, shuffleboard tables and a ping pong table and is only available to the guests staying in that building.

Outdoor Recreation: Summer activities include tennis, badminton, golf driving nets, horseshoes, basketball, baseball, soccer. The sports equipment for these activities can be borrowed from the Front Desk. Because the Centre is located on the shores of beautiful Kempenfelt Bay, guests can swim (water socks recommended) or take a cruise in our paddleboats. Bonfires on the beach can also be arranged with advanced notice. Several bicycles are available to take a ride in our quiet rural setting. Within a short drive from the Centre, golfers can enjoy several golf courses including the adjacent 9-hole Allandale Golf Course or the 18-hole Harbourview and Innisbrook courses. In the winter season, guests can enjoy quiet snowy walks or they can visit one of the many cross country or alpine ski resorts in the area.

Business Services and Office: Adjacent to the Front Desk foyer, guests will find the Client Computer Centre where they can access the internet, pick up email messages or use the computers for word processing work, scanning or burning CD's. There is a nominal charge for printing, photocopying and faxing.

Airport Shuttle: Door-to-door transportation to and from the airports in Toronto and Barrie can be arranged by calling Sinton Transportation at 1-800-947-3839 or 1-705-722-6666 (provides vans, limousines & coaches – credit cards/cash); Simcoe County Airport Service at 1-800-461-7529 (provides vans – credit & debit cards/cash).

Payment Methods: We accept debit cards, VISA, American Express and MasterCard. There are no bank machines on property.

Souvenirs: Guests can choose from a wide selection of Kempenfelt merchandise available for sale from the Front Desk.

Other Items for Sale: The Front Desk stocks a variety of items – toothbrushes, toothpaste, razors, combs, Tylenol, film, batteries, cigarettes, chocolate bars and chips – just to name a few.



1-705-722-8080

KEMPENFELT CENTRE TOTALS

140 BEDS • 79 BEDROOMS • 10 MAIN MEETING ROOMS • 10 SEMINAR ROOMS

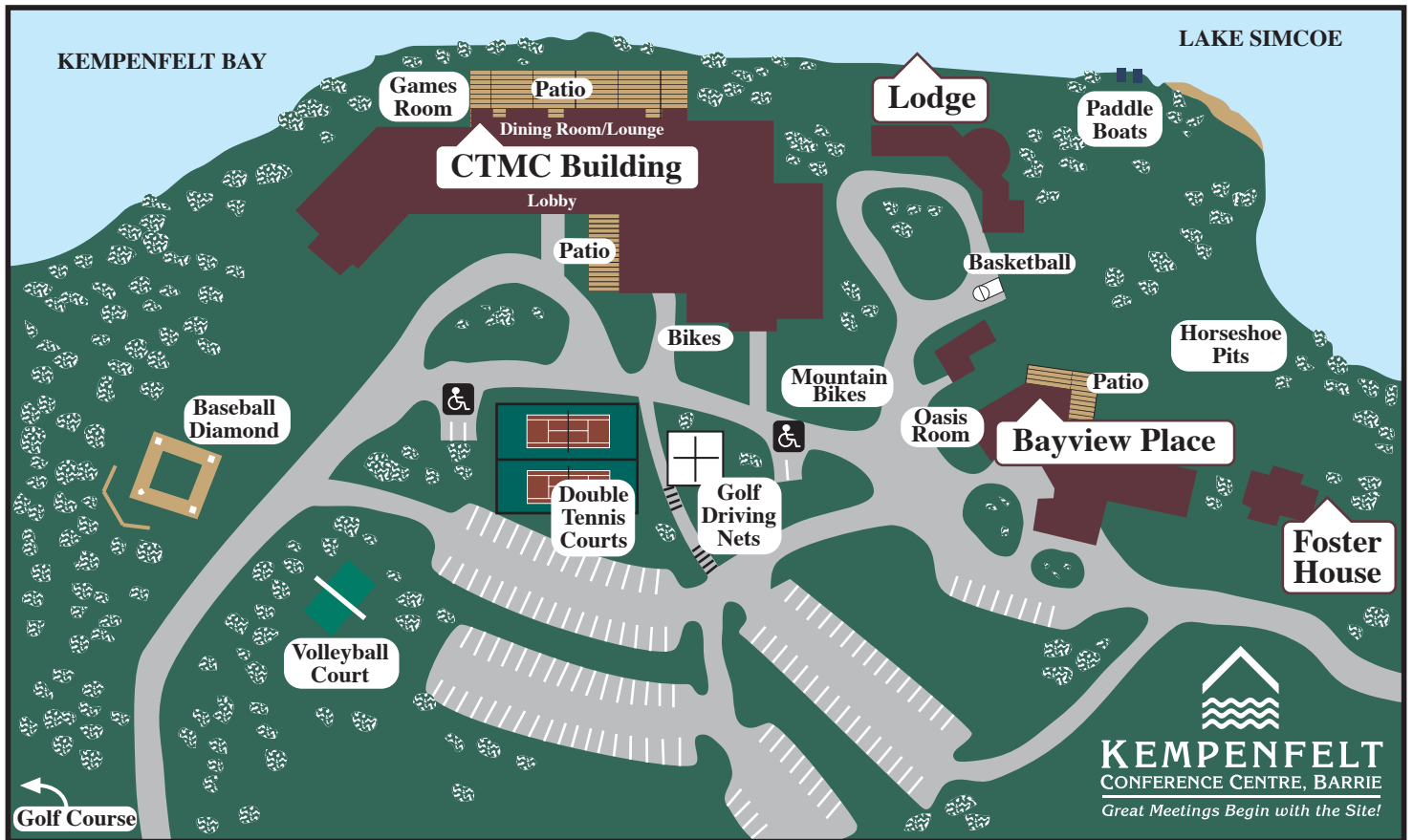
... great meetings begin with the site! www.kempenfelt.com



CTMC building (Rooms 1101–1220)



The Lodge (Rooms 2101–2207)



Bayview Place (Rooms 3101–3309)



Foster House (Rooms 4101–4106)

WHERE TO FIND?

- Front Desk** - CTMC lobby
- Dining Room** - CTMC lower level
- Bar/Lounge** - CTMC lower level
- Hot Tub/Sauna/Exercise Room** - Bayview main floor

KEMPENFELT CENTRE TOTALS

140 BEDS • 79 BEDROOMS • 10 MAIN MEETING ROOMS • 10 SEMINAR ROOMS

... great meetings begin with the site! www.kempenfelt.com